



EnVue
3535 Plainsman
Bryan, TX 77802

envueapt.com
envuemgr@comcapp.com
(855) 736-8223

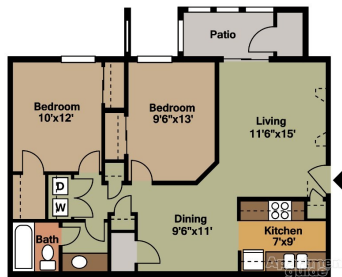
Superior Location...Phenomenal Value.

Our caring management and maintenance team will make you feel right at home. EnVue offers 1, 2 and 3 bedroom apartment homes available in four different pet friendly floor plans. EnVue is more than just a place to live; it's a lifestyle with comforts like a 24 hour fitness center, community laundry facility, pet friendly areas and a comfortable pool to name a few.

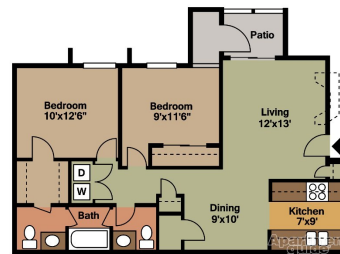
EnVue is close to schools, restaurants and you can enjoy the outdoors at Tanglewood Park, all located near your new home.



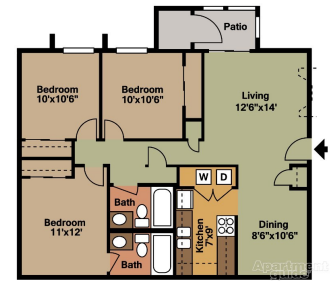
1 Bedroom / 1 Bathroom
 640 Square Feet



2 Bedroom / 1 Bathroom
 850 Square Feet



2 Bedroom / 1.5 Bathroom
 886 Square Feet



3 Bedroom / 2 Bathroom
 1000 Square Feet

Apartment Features:

- Newly Renovated Interiors
- Central AC & Heating
- Ceiling Fans
- Dishwasher
- Microwave (select units)
- Garbage Disposal
- Refrigerator
- Range (Oven)
- Upgraded Appliances
- Shower/Bath Tub Combo
- Patio or Balcony
- Spacious Closets
- Cable Ready
- High Speed Internet Access
- Vinyl Flooring
- Washer/Dryer Connections
- Fireplace (72 units)
- Window Treatments

Community Features:

- Accepts Electronic Payments
- 24-Hour Emergency Maintenance
- 24-Hour Private Fitness Center
- Community Laundry Facilities
- Pet Friendly
- Pool

Pet Policy:

Maximum of 2 pets per home. Dog weight limit is 50 lbs. The one-time pet fee is \$200 per pet. One-time non-refundable pet fee applies for both cats and/or dogs. Our pet-friendly apartments welcome most breeds of dogs. However, because certain dogs do not thrive well in an apartment community environment, we cannot accommodate aggressive breeds.